



State Education  
Development Agency  
Republic of Latvia



Erasmus+ TCA thematic seminar  
**Green Practices for Increasing  
Environmental Sustainability**

# **Greener Communities**

*Leading researcher Ruta Vanaga*



# Greener community

## LEARNING FROM EACH OTHER

---

Dr.Sc.ing. Ruta Vanaga  
Riga Technical University  
Institute of Energy Systems and Environment



## THE AIM

The aim of this workshop is to explore eco-friendly living and community involvement, share experiences and brainstorm

- BE CREATIVE
- SHARE YOUR EXPERIENCES
- ENVISION





## TABLE OF CONTENTS

**01**

INTRO

**02**

WHO ARE WE?

**03**

HANDS - ON TASK I

**04**

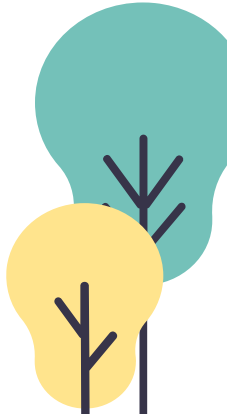
HANDS - ON TASK II

**05**

TOP - DOWN

**06**

OVERVIEW




# SHORTLY ABOUT ME

## Milestones

- **Mgr. Architecture**
- **Impact of the built environment to the surrounding environment** – ecological footprint
- **10th International Architecture Exhibition:** Cities, architecture and society - > CEBRA, Aarhus DK 2007
- **Energy consumption of the building / energy efficiency strategies** – energy auditor
- **Low energy buildings**– *passivhaus designer* certificate
- **Environmental engineering** – dr.sc.ing.
- **Research topics** – innovative building components, historic buildings, community engagement

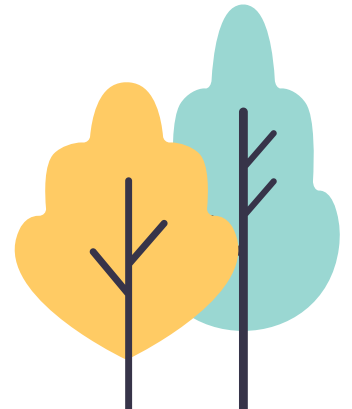




# How will we live together?

La Biennale Architettura 2020 Venice

Curator of the 17th International Exhibition Hashim Sarkis



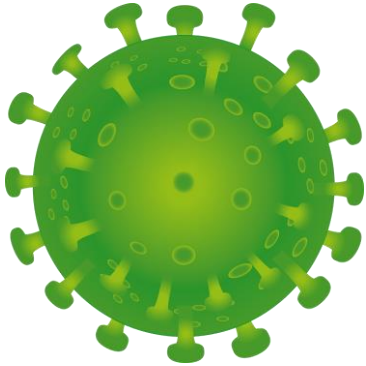


## How will we live together?

We need a new spatial contract. In the context of widening political divides and growing economic inequalities, we call on architects to imagine spaces in which we can generously live *together*:

- *together* as human beings who, despite our increasing individuality, yearn to connect with one another and with other species across digital and real space;
- *together* as new households looking for more diverse and dignified spaces for inhabitation;
- *together* as emerging communities that demand equity, inclusion and spatial identity;
- *together* across political borders to imagine new geographies of association;
- and *together* as a planet facing crises that require global action for us to continue living at all.

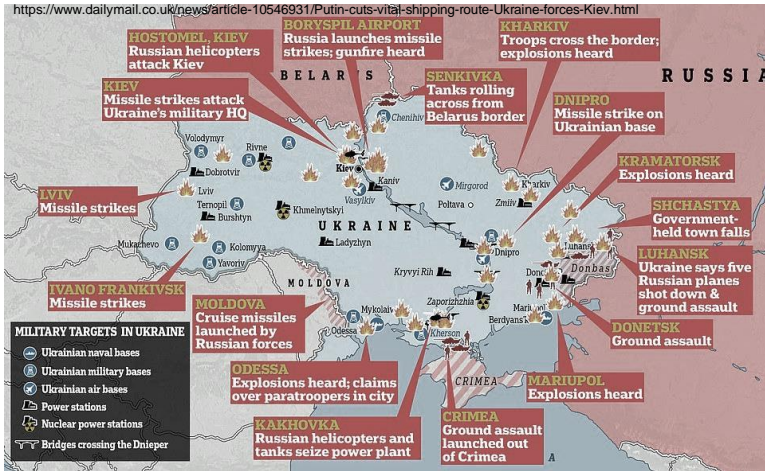
## Recent challenges



  
**STAY HOME**  
**STAY SAFE**  
**SAVE LIVES**



## Recent challenges

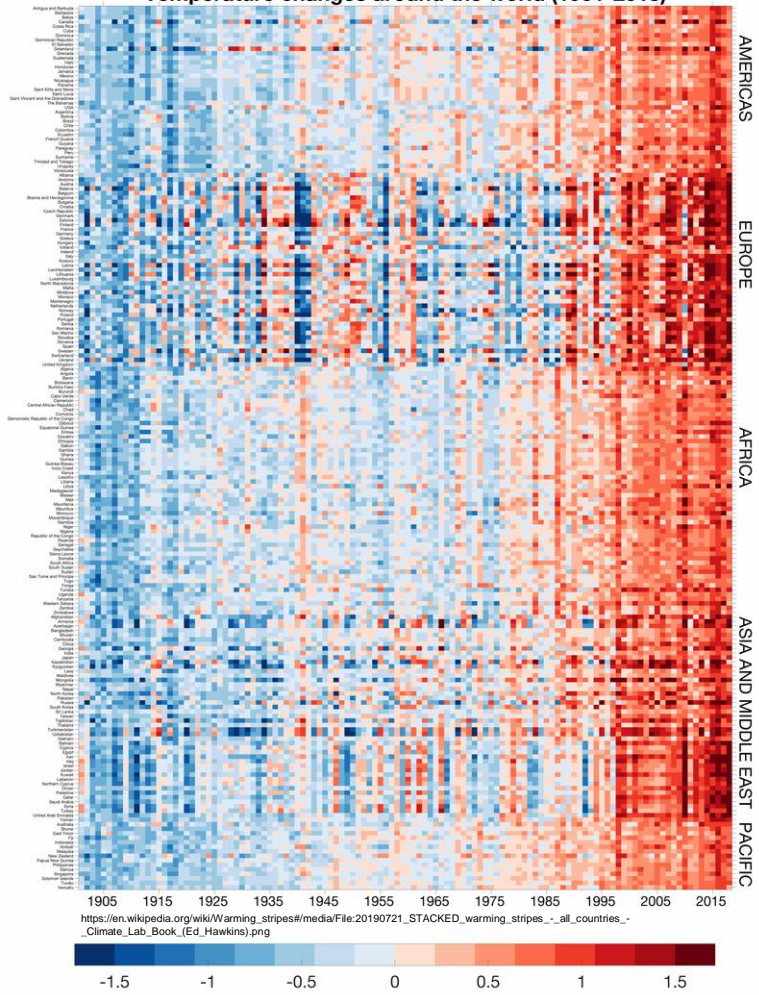


24.02.2022.





Temperature changes around the world (1901-2018)



(How) will we live (together)?



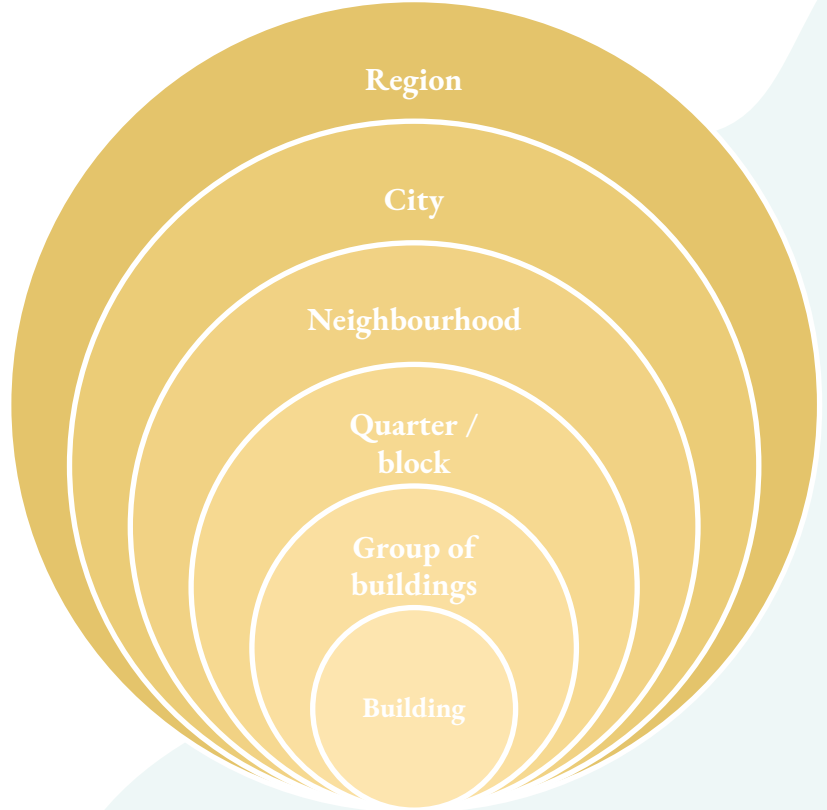


**TOGETHER**



# **WHO ARE WE?**

**How would you define?**



Region

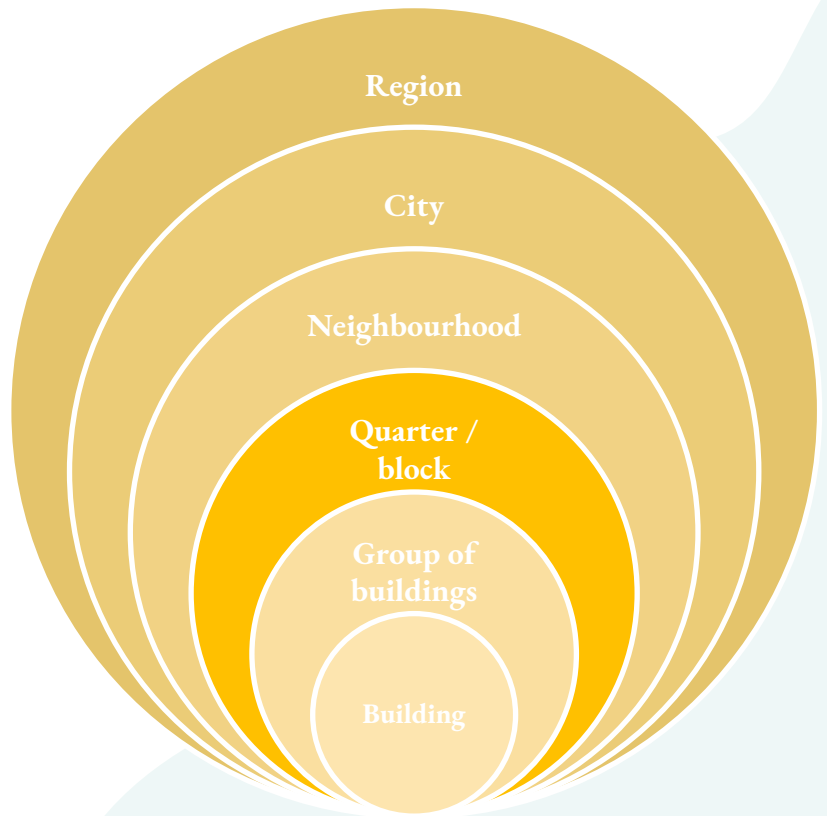
City

Neighbourhood

Quarter /  
block

Group of  
buildings

Building



Region

City

Neighbourhood

Quarter /  
block

Group of  
buildings

Building



New European Bauhaus  
beautiful | sustainable | together

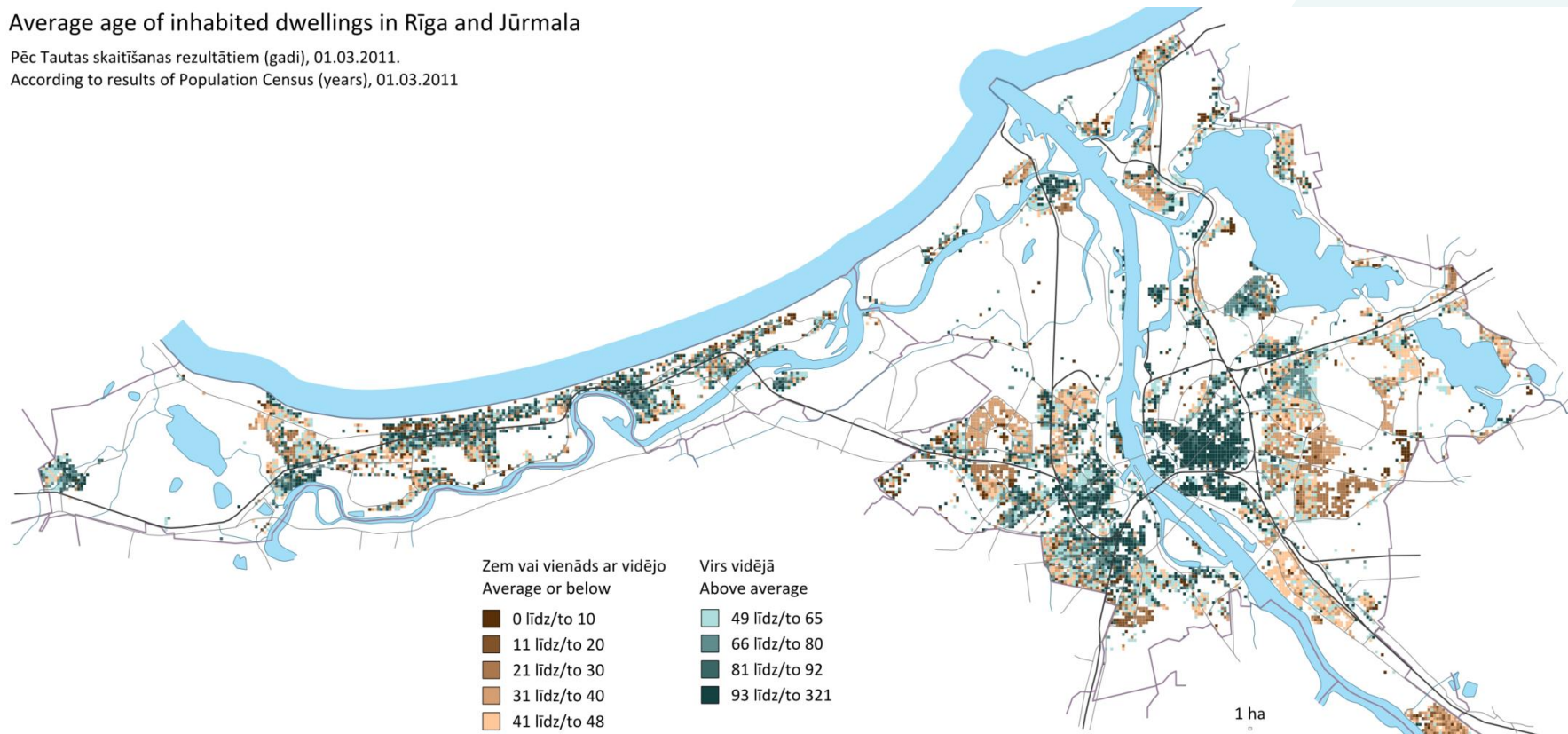




## Average age of inhabited dwellings in Rīga and Jūrmala

Pēc Tautas skaitīšanas rezultātiem (gadi), 01.03.2011.

According to results of Population Census (years), 01.03.2011



**BUT WHO WE  
REALLY ARE?**

Time for kahoot

**BEFORE WE DIVE  
IN**

## OBJECTIVE

Our primary goal today is to engage in a collaborative and innovative exercise that explores the principles of sustainable urban planning and community development. By working together to design an imaginary building block, we aim to:

- Foster creativity and idea's generating skills among participants
- Encourage collaboration and teamwork in addressing complex challenges
- Deepen our understanding of the interconnectedness between built environments and community well-being
- Explore practical solutions for creating vibrant, resilient, and inclusive neighborhoods
- Learn from each other!





## Importance of Sustainable Community Development:

As urbanization continues to accelerate and our cities grow, it's crucial that we prioritize sustainability in the design and development of our neighborhoods. Here's why:


**1.Environmental Stewardship:** Sustainable community development allows us to minimize our environmental footprint by promoting energy efficiency, reducing waste generation, and preserving natural resources.

**2.Social Equity:** By creating inclusive and accessible spaces, we can ensure that all residents, regardless of background or socioeconomic status, have access to essential services, amenities, and opportunities.

**3.Economic Resilience:** Sustainable communities are more economically resilient, attracting businesses, and creating job opportunities while reducing long-term costs associated with infrastructure and resource management.

**4.Community Well-being:** Vibrant and sustainable neighborhoods promote physical and mental well-being by providing safe, walkable streets, green spaces, recreational facilities, and social gathering places.

**5.Climate Resilience:** In the face of climate change impacts, sustainable communities are better equipped to adapt and mitigate risks, protecting residents and infrastructure from extreme weather events and environmental hazards.



Let's keep these objectives and principles in mind. By envisioning and designing sustainable building blocks, we have the opportunity to shape the future of our communities for the better.

Now, let's roll up our sleeves and get ready to unleash our creativity and innovation as we dive into the Design Challenge!

# **HANDS – ON TASK**

**TIME FOR A WORKSHOP**



## HANDS-ON TASK



### **DESIGN A CASE-STUDY BLOCK**

Be a random observer – create a hypothetical building block



### **DEFINE CHALLENGES AND BENEFITS**

Describe a particular problems inhabitants of this block face



### **PRESENT**

Introduce your hypothetical block to other teams



### **SWAP AND SOLVE**

Become a problem solver / urban planner



### **PRESENT**

Share the knowledge!

## DESIGN A CASE-STUDY BLOCK

Collaboratively design an imaginary building block that comprises several buildings. Consider factors such as building types (residential/non-residential), construction years, sizes (high-rise/low-rise), and surrounding amenities. Each group member represents 1 building.



## DEFINE CHALLENGES AND BENEFITS

For each building in the block, identify hypothetical challenges related to sustainability and community well-being. These challenges should range from energy efficiency and transportation access to waste management and social inclusivity. **BE SPECIFIC!**

Identify at least five positive features or strengths of the building block. These could include green infrastructure, mixed land use, community amenities, pedestrian-friendly design, and social cohesion initiatives.

## SOLVE THE PROBLEM

Analyze the challenges defined by the original creators and collaboratively devise practical solutions to address them. Solutions should be innovative, realistic, and tailored to the specific context of the building block. Think about the multi-purpose solutions!

**LET`S START**

**TIME FOR A WORKSHOP**

**Think about the people**  
**Think about the community**



# THANKS

ruta.vanaga@rtu.lv  
<https://videszinatne.rtu.lv/>

This presentation template was created by **Slidesgo**,  
including icons by **Flaticon**, and infographics & images by **Freepik**.

